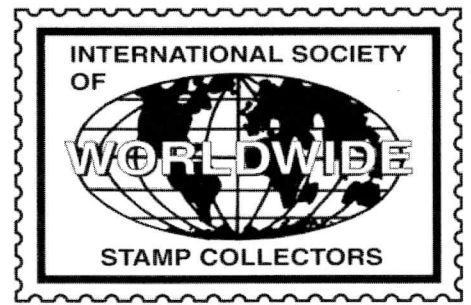


The Circuit



Affiliate of APS (#151) & ATA (#89)

July/August 2008 • Volume 26 No. 4

www.iswsc.org

The Official Journal of the International Society of Worldwide Stamp Collectors

Animated characters on stamps is a colorful, fascinating topic for collectors

Collecting Disney Stamps

by William Silvester (#1058)
Canada Regional Representative

Disney topical collectors have it easier than most. They do not have to use a magnifier to see if that little speck beside the barn on a stamp is a cat or not. They do not have to decide if the posthorn in the Europa symbol belongs in the music collection and rarely do they have to break a set to get the one stamp they need for their topic.

WHAT IS A DISNEY STAMP?

What then is a Disney stamp? According to the now out of print, *Handbook of Disney Philately*, a Disney stamp must be drawn by Disney artists and authorized by the Walt Disney company. After all, a Picasso painted by anyone else is not a Picasso. The same premise holds true for all Disney philately. To qualify, postage meter slogans must be authorized, cachets on first day covers must be rendered by Disney artists, special cancels must be the result of cooperation between a post office and the Disney Company. Contrived philatelic pieces are not considered authentic Disney works and therefore are not an essential part of a Disney collection.

There are many different opinions as to what is and what is not collectible. The opinions expressed above are those of the author and are mentioned here to define the scope of this article and not with any



intention of dictating rules of collecting.

WHY DISNEY STAMPS?

Ever since the first Disney stamps were issued, they have been the subject of heated debate. In the early 80's, virtually every issue of every stamp publication had a letter from an irate collector bemoaning the desecration of his hobby by Disney 'wallpaper'. Times have changed. The Disney stamps have probably done more to recruit new collectors, young and old, than any other stamp issues. They encourage children (the future of our hobby) and delight all ages with their bright colors, humor and variety. People who start collecting Disney stamps often branch out into other topics or countries as their interest in philately expands.

It is unlikely that the Disney stamps will ever command large investment returns, though a few of the early issues are becoming increasingly hard to find. Thousands of people collect Disney stamps. Those dealers who stock them have a hard time keeping them on hand. Few collectors are willing to part with the Disney stamps they have.

The Disney artists are professionals. All have years



Continued on page 16

ISWSC BOARD OF DIRECTORS**Executive Director:**

Terry Myers (#736)
9463 Benbrook Blvd. #114
Benbrook, TX 76126-3235—USA
TMyers6497@aol.com

President ('09):

Joanne Berkowitz (#98)
125 43rd Street
Sacramento, CA 95819-2101—USA
joannebe@pacbell.net

Secretary ('09):

John Luong (#808)
4877 W 129th St
Hawthorne, CA 90250-5001—USA
j.luong@gmx.de

Director of Membership ('09):

Jeff Schumer (#2101)
6410 Cloister Gate Drive
Baltimore, MD 21212-1057—USA
jschumer@comcast.net

Director of Public Relations ('09):

John Seidl (#1646)
4324 Granby Way
Marietta, GA 30062-8150—USA
jseidl@mindspring.com

Director of Stamp Outreach ('09):

Richard Rizzo (#2215)
18300 Winter Park Court
Gaithersburg, MD 20879-4626—USA
poly76ce@gmail.com

Director At-Large ('08):

Duncan Koller (#2154)
844 NE 73rd Ave.
Hillsboro, OR 97124-6989—USA
duncankoller@comcast.net

Director At-Large ('08) &**Immediate Past President:**

Randy Smith (#1111)
PO Box 2085
Minneapolis, MN 55402-0085—USA
rasmory4@frontiernet.net

WEBMASTER

Rick Simpson (#1703)
HC 79 Box 52E
Romney, WV 26757-9509—USA
rsimpson@141.com

INTERIM THE CIRCUIT EDITOR

Randy Smith (#1111)
PO Box 2085
Minneapolis, MN 55402-0085—USA
rasmory4@frontiernet.net

REGIONAL REPRESENTATIVES**Australasia:**

Noel Routley (#1610)
Post Box 166
Koondrook, VIC 3580—AUSTRALIA
noelroutley@bigpond.com

British Isles:

Karen Rose (#584)
47 Heron Road
Oldbury, Warley
West Midlands B68 8AG
GREAT BRITAIN

Cuba:

Cleto Sanchez (#1311)
PO Box 2222
Havana, CP-10200—CUBA

Canada:

William Silvester (#1058)
378C Cotlow Road
Victoria, BC V9C 2G1—CANADA
wgsilvester@shaw.ca

Eastern Europe:

Jan Szpyrka (#539)
ul. Srebrna 29
PL-44121 Gliwice—POLAND
Jan.Szpyrka@polsl.pl

Scandinavia/Baltics:

Vacant

Western Europe:

Vacant

Mail or e-mail your questions to the appropriate volunteer. Please include a self-addressed, stamped envelope or an International Reply Coupon.

ISWSC PROGRAM CONTACTS**SALES CIRCUIT MANAGER**

John Baumert (#1246)
PO Box 5574
Bloomington, IN 47407—USA
jhbbaumert@dishmail.net

OMNI EXCHANGE**Manager:**

David Paul (#59)
2 Heritage Drive
Belchertown, MA 01007-9548—USA
dpaul11@hotmail.com

Co-Manager:

Dale E. Harris (#2311)
212 Schofield Drive
Reedsport, OR 97467-1366—USA
harrisda@ohsu.edu

Co-Manager:

Roger Kraus (#2462)
115 Alandale Ave
Brockton, MA 02301-1770—USA
roger.kraus@comcast.net

PREMIUM CIRCUIT MANAGER

Ken Wills (#2150)
5308 Shadow Glen Drive
Grapevine, TX 76051-7350—USA
wills@airmail.net

AUCTION MANAGER

Mike Crump (#2126)
PO Box 331908
Atlantic Beach, FL 32233-1908—USA
desoto1947@yahoo.com

STAMP ANSWER MAN

Myron Wambold (#2403)
E&M Etcetera; PO Box 2563
Inverness, FL 34451-2563—USA
myronnw@tampabay.rr.com

WHATZIT? COORDINATOR

Richard Barnes (#2425)
11715 123rd Street NW
Edmonton AB T5M 0G8—CANADA
rtbarnes@shaw.ca

SWAP CIRCUIT**Program Coordinator &****Small/Definitive II Circuit Manager:**

Randy Smith (#1111)
(see address at left)

Large I Circuit Manager:

John McArthur (#768)
14 NW Stonebrook Drive
Lawton, OK 73505-9599—USA
kjojmm@sbcglobal.net

Large II Circuit Manager:

John Seidl (#1646)
(see address at left)

Small/Definitive I Circuit Manager:

Duncan Koller (#2154)
(see address at left)

Super Circuit Manager:

Bob Armstrong (#1392)
2209 SW Oak Ridge Rd
Palm City, FL 34990-2159—USA
googiepox@adelphia.net

CTO Circuit Manager:

William Silvester (#1058)
378C Cotlow Road
Victoria, BC V9C 2G1—CANADA
wgsilvester@shaw.ca

USA Circuit Manager:

Larry Veverka (#2363)
935 University Street
Walla Walla, WA 99362-2342—USA
veverka@charter.net

NEXT ISSUE DEADLINE:
August 20, 2008

President's Report: Shows, Catalogues

by Joanne Berkowitz (#98)
ISWSC President

While you will read this in summer, as I write, it is glorious spring, complete with sunshine and hay fever. April was a busy month for philatelic activities. Westpex, the San Francisco stamp show, is possibly the best show on the West coast. I spent 2 days admiring exhibits, shopping for stamps and meeting with old and new friends.

The Internet has changed stamp auctions greatly. Because most auctions involve live online bidders, they are no longer the efficient sales they used to be. Part I of the Westpex auction began at 10 AM and ended 30 minutes after midnight! I was interested in a couple of stamps being auctioned on the second day, but I did not have the time or patience to wait around while they waded through the long list that preceded them. Since I had already exhausted my budget, it was probably a good thing.

The Sacramento Philatelic Society's Easter Seal Stamp Show was held in the first weekend of April. As usual, I manned the kitchen, serving snacks and lunches for 50 or more people each day. Stamp collectors in our area look forward to the annual show, with huge tables of stamps, all at 2 cents each. Dealers also are present, pledging a portion of their receipts to Easter Seals. Supplies and other items donated to the club during the year are also sold. Some items are just not saleable. At the end of the show, we filled the dumpster with elderly Scott catalogues that had been donated by a dealer who was going out of business, as well as a motley collection of old binders. When I say elderly, I mean it. The catalogues dated from the 1930's to the 1960's. When we couldn't find buyers, we tried giving them away – and even then we were left with dozens of them to load into the dumpster. This makes me wonder why Scott does not have an electronic subscription or electronic update service. There has got to be a better way than reissuing those heavy (and getting heavier) catalogues each year.

We are back on track with the auction, so bid and have fun. Please check out the website. We have been busy updating the site, correcting information and making it easier to use. If you have comments, additions or corrections, please let us know. My thanks go to Rick Simpson (#1703) for all the work in keeping the site current and interesting.

Dues/Advertising Policy

Dues Information:

Single/Dealer/Club 1 yr. membership: \$15.00*

Single/Dealer/Club 2 yr. membership: \$27.00*

Single/Dealer/Club 3 yr. membership: \$39.00*

Youth 1 yr. membership (under 18): \$12.00*

*Plus 250 large commemoratives for the Youth Program or equivalent donation in U.S. funds.

Dues include six newsletters per year. You may pay for up to three years at a time. For an application or further information, send a SASE or an IRC to:

Terry Myers

ISWSC Executive Director

9463 Benbrook Blvd. #114

Benbrook, TX 76126-3235—USA

TMyers6497@aol.com

Advertising Policy:

For reasons of accountability, only members of the ISWSC, APS or ASDA may place ads. All ads dealing with philatelic concerns are acceptable. We reserve the right to edit out objectionable language. Advertisers are expected to respond to all inquiries, so be sure you can handle the responses before you offer to trade, buy or sell. If you have a bad result from answering an advertisement, contact the Editor. We will try to resolve the conflict.

Display Rates (Camera Ready*) per Insertion:

Full page: \$75.00

Half page: \$40.00

Quarter page: \$20.00

Per column inch: \$5.00

Six repeat insertions of the same sized ad for the cost of five ads (one free). We also offer a two-sided insertion for \$125.00 per issue.

*Camera Ready means ready to paste up or scan and print. Reductions and typesetting extra.

Classified Rates per Insertion:

First 30 words, including name, address and ZIP Code are \$3.00. Additional words are 20 for \$1.00.

NOTE: *State abbreviations* = one word; "P.O. Box 1234" = two words; ZIP Code = one word.

Make all checks payable to "ISWSC" in U.S. dollars. Send text and payment for ads to *The Circuit* Editor (see address on page 2).

Auctions Include Great Values

Welcome to Auction #32! I hope you enjoy the search through these auction lots which contain many great values. I received a request for more lots with singles and sets. You will see an increase of those in Auction #33, tentatively scheduled for the September/October issue of *The Circuit*. At the time of this writing, Auction #31 had just been published, so I have no results on that auction.

When submitting lots for auction, I would appreciate minimum bids on the dollar or on the quarter (e.g. \$1.00, \$1.25, \$1.50 etc). This makes my record keeping simpler—thank you. Please include complete contact information when submitting lots for auction, including your mailing address, e-mail address and phone number. If you want assistance with writing your lot descriptions, I will be glad to help. Happy auctioning!

Mike Crump

P.O. Box 331908

Atlantic Beach, FL 32233

Phone: (904) 220-2685 (home)

(904) 210-3788 (cell)

E-mail: desoto1947@yahoo.com

AUCTION RULES AND INFORMATION

1. Bid increments: \$1-5 = \$0.25, \$5-10 = \$0.50, \$10-30 = \$1.00, \$30-100 = \$2.00, Over \$100 = \$5.00. Bid in these increments only. Odd amounts will be lowered to the next increment. All bids are in US dollars.
2. High bidder wins at one advance over second-highest bidder.
3. If there are tie bids, the earliest postmark wins.
4. If only one bid is received, lot goes at the minimum bid listed by the owner.
5. State the highest you are willing to pay. Your high bid will be used only if necessary. No "buy" bids or requests for percentage increases will be accepted.
6. Lots are returnable for items misdescribed or misidentified. No returns on large lots or collections, etc.
7. The Auctioneer reserves the right to decline unreasonably low bids.
8. Lot information will be sent to successful bidders with invoice. Invoice will include postage. Payment is expected in U.S. funds within 10 days.
9. Lots will be shipped and billed by Mike Crump and payment should be sent to him at the address on the invoice.

ISWSC AUCTION #32 BID SHEET ~ Closing August 1, 2008

PLEASE PRINT CLEARLY OR ATTACH AN ADDRESS LABEL.

MEMBER #:

NAME:

ADDRESS:

PHONE:

E-MAIL:

LOT #	BID	LOT #	BID	LOT #	BID	LOT #	BID	LOT #	BID

Mail to: ISWSC Auction #32; c/o Mike Crump; PO Box 331908; Atlantic Beach, FL 32233 or e-mail to: desoto1947@yahoo.com

ISWSC AUCTION #32

Closing August 1, 2008

Lot #	Description	Minimum Bid
1	USA. Stamps in mint year folders: 1977, 78, 80, 81, 82, postage value \$29, HBO, CV \$68	\$25
2	USA. Mint set for 1978, face value \$3.64, HBO, CV \$14.50	\$4
3	USA. Mint set for 1980, face value \$4.20, HBO, CV \$15.95	\$4.50
4	USA. #397*, 1 cent Balboa, SF Fair, straight edge on top w/heavy centerline, CV \$30	\$2.50
5	USA. #727 on 2 FDCs cancelled in Newburg, NY, unaddressed, CV \$7	NMB
6	USA. #U527, 4 cent black Mt. Vernon, official to Postmaster Mill River, MA, circa 1932, penalty cancel, excellent, cut square, CV \$16	\$6.50
7	USA. 149 stamped envelopes, 127 mostly 8-30 cents, heavy dups, some interesting items; 35:1899 2 cent Trans. Miss. to 1950; 7/7/50 USS Missouri strike, est. value \$30, HBO	NMB
8	USA. #CE2*, plate block of 10 w/centerline number	\$2
9	USA. 284 stamps, * & U in 2 APS ret. sales books, #93//2265, C9//JQ1, Mint incl. #397, 511, 612, 644; also 7 postal stationary covers * & U; net sales price \$207, CV much higher	\$75
10	USA. Covers: 37 ship cancels, 1961-63	\$5
11	USA. Air letter sheets, #UC46, UC49-52, UC54-60, MNH, not folded, CV \$25	\$12
12	USA. Air letter sheet, #UC53c, 1980, MNH, not folded, colors missing, CV \$75	\$20
13	USA. Air letter sheets, #UC54-60 (2 each), MNH, not folded, CV \$20	\$10
14	USA. Air letter sheets, #UC54, UC55 (2), UC56, UC59, UC60 (3), MNH, not folded, CV \$12	\$6
15	USA. Air letter sheet, #UC60, Space Shuttle Return 12/5/85 commem. overprint, MNH, not folded, est. value \$5.	NMB
16	USA. 135+ (mostly) covers/postcards/postal cards, many U, 1900 to recent, some enclosures; great for study	\$20
17	USA. 3 FDCs, Artcraft cachets, clean and unaddressed, #1293, 1294, 1295, CV \$48.50	\$15
18	USA. FDCs—20 covers w/singles, blocks, 1948-64, all but one w/cachet, some addr. in pencil	\$12.50
19	Africa. Better value stamps cataloged in glassines; Ifni #82-3*, B31-2, *; Tanzania #616B, 621, U; Zambia #5400, U; also official FDC for Swaziland featuring #624-627 w/cancellation (11/25/93), CV \$10+	NMB
20	Africa. 400 all different, postally used, large, many high values.	\$14
21	Aland. Spectacular! all MNH 1998 issues in Aland Posten promo brochure: #138-139, 143a (complete bklt), 144, 145, 146, 149-51, 147 (sheet of 10), 148, 88, 1 other; CV \$34+	\$9
22	Americana. Worldwide group of US subjects with 9 GB covers/cards, 2 Ireland, 1 Peru plus 1930s French Ben Franklin stamp pair	\$14

Abbreviations:

& = And

+ = Plus

// = Incomplete

ADDR = Address (ed)

ANN = Anniversary

BKLT = Booklet

BLK = Block

CAT = Catalogue (d)

COMMEM = Commemorative (s)

CPL = Complete

CR = Crease

CV = Latest Scott Catalog Value

DEFIN = Definitive (s)

DIFF = Different

DUPS = Duplicates

EST = Estimate (d)

F = Fine, off center, but perfs
don't touch design

FDC = First Day Cover

G = Good, perfs cut into design

HBO = Held By Owner

HC = Heavy Cancel

HH = Heavy Hinged

HR = Hinge Remnant

INCL = Include (s) (ed)

LC = Light Cancel

M or * = Mint

MLH = Mint Light Hinge

MH = Mint Hinged

MNH or ** = Mint Never Hinged

NMB = No Minimum Bid

NG = No Gum

RET = Retired, Returned

S/S = Souvenir Sheet

SE = Straight Edge

TH = Thin

U = Used

VF = Very Fine, wide margins

VG = Very Good, perfs touch
design

W/ = With

Lot #	Description	Minimum Bid
23	Andorra (15) stamps plus Austria (66), * & U, ret. OMNI book: Sp. Andorra: #23, 24, 38, 39, J1 (all *); 60, 142, 174, 183, 211, 214, 218, 234, 409 (U); Austria: 856*, 967*; many nice used higher values; CV \$53+	\$5
24	Argentina , Brazil, Chile. All nice MNH; Argentina: #1192, 1193, B25; Brazil: 2087-8, 2089-91, 2163, 2285a; Chile: 376, 380, 412, 413, 414, 431, C313; CV \$18.30	\$2
25	Asia . Nepal postcards (16), Chinese cards/covers (31), wide variety of stamps, plus all diff., mainly U stamps: Bhutan (17), Burma (9), Hong Kong (10), Laos (4), Nepal (4), S. Korea (8), Sri Lanka (5); CV ?	\$30
26	Asia . Cambodia #15, U; Gwalior 110, U; India 1005-6**, Hong Kong 12 stamps, * & U; PRC 2036**, Japan B47, U; Taiwan 1252**, 1963, U; all better values at low minimum, all cat., in glassines/cards; CV \$48+	\$5
27	Belgian Colonies . Belgian Congo (106 diff.), * & U to 1940s; incl. #115-129 complete (U); Ruanda-Urundi (73), * & U, to 1940s; CV \$45+	NMB
28	Belgium . Mint stamps, incl. (3) #B840 s/s, B747-52, B354-59, 1166, B1029-30; HB, CV \$22+	\$7
29	Brazil . 1943 Brapex #609-11 FDC, 100 th Anniversary of 1st issues, 2 diff showcards, show cancels red & blue, 1 mailed envelope with s/s show cancels, censored-registered; various markings; very interesting!	\$10
30	Canada . Pristine! Collectors Stamps in 3 Canada Post sales envelopes (unopened): 1. Jan-Mar 2003: #1969, 1970, 1971, 1973, 1982a, 1983, 1984, 1974, 1985; 2. July-Sep 2003: #1992, 1993, 1994-97, 1998, 1977; 3. July-Sep 2004: #2023, 2049, 2050, 2051, 2052, 2056; CV \$37+	\$10
31	Canada . #67, 68, 113, 120, 141, 146, 155, 446 (coil pair), U; #417-429A (set) MH; Newfoundland #60, U; CV \$20	\$3
32	Canada . #204, 260, MH, F/VF, CV \$18	\$4
33	Canada . Used: #38, 51, 52, 97, 98, 148, 222, 273, 411, (+ space filler #53); CV \$59	\$6
34	Canada . 6 copies, MNH, #1172d, perf 13, (3 w/stains), 1 scuffed, 3 VF; CV \$17.50 each; Total CV \$52+	NMB
35	Caribbean . 145 U Trinidad, Antigua, Dominican Republic, British Virgin Islands, Redonda, Caymans, Dominica; HBO, CV \$46.90	\$9
36	Central America . 967 diff. on Scott specialty pages in Specialty binder; 8 countries, no Cuba; Quantities range 107-155 each country (48 Panama); Best: Dominican Republic; mostly U, lower values, remainders; CV \$210	\$20
37	Cuba . Souvenir sheets (6), M: #4464 (bridges), 4445 (1 st baseball game), (also from 2005-2006): service animals, locomotives, cats, Int'l Conference; est. value \$12	\$3
38	Cuba . Souvenir sheets (7), M, from 2005-2006: ships, dinosaurs, snails, fire engines, juvenile philately, Int'l Conference, first stamps; est. value \$14	\$3.50
39	Cuba . Recent issues, all MNH: #4439, 4459-63, 4465, 4479-82, 4483, 4500-01, 2461 (5 copies); CV \$20+	\$4
40	Czech Republic . 51 diff covers/cards, wide variety of stamps; Czechoslovak Art, * single; Czech Republic 1-6*, unmounted, and 20 diff U	\$30
41	Denmark . 300 U defines, F/VF, on sheets, few dups; plus 200 U defines, high dup in glassines; Useful earlier stamps, V, \$75	\$25
42	Ecuador . 1945 circa cover, large pre-addressed envelope w/PANAGRA violet hand stamp, 7 stamps on back, censor strip on corner	NMB
43	Europe . Grab-bag, 125 stamps, * & U, way over \$100 in CV, ridiculously low MB!	\$2.50
44	Europe . All higher values, cat. in glassines; Austria #1875, 1876 (U); Belgium 1791, 1993, 1994 (U); France 309-310*, 649 (U); Ireland 99, 101, 102, (U); CV \$30+	\$3
45	Europe . M & U better values, all cataloged: Liechtenstein (U) #593, 1180-81, 1201-2; Luxembourg 770*, B270-5*; Monaco 13, 19*, 26, 83*, 85*, 245-247*; Portugal 414-19, 995-6, 1012*, 1130*; Spain 1126*; Switzerland 82a, 82b, 180*, 182 (2 copies); Poland 1110*, 1175-77*; Romania B14*; CV \$57+	\$6
46	Fiume . 114 stamps on pages, photocopy from APRL article on forged stamps of Fiume; Dealer reported some may be counterfeits; Study project! Rare opportunity!	\$25

Lot #	Description	Minimum Bid
47	Fujeira. 80 copies of Churchill souvenir sheet, stamps of 2 values; Scott unlisted	\$8
48	Germany. 100+ covers, mostly commems, some fan mail covers, w/additions, 135-150 stamps, CV \$50	NMB
49	Germany & States. All cataloged, all higher values; included: S/S 489*, B90*, 982, B823, B837 (U); DDR 2515*, 91 (U); Wurt. 8N23*, 8N24*, 8N25*, 8N27*; Bavaria 92-3 (U); total CV \$30	\$3
50	Germany. 75 covers, 95 stamps, fan mail to actress/singer; dups & several w/fan covers; CV \$35	NMB
51	Germany. 28 fan mail covers to American Actress Helen Schneider at the Rhein-Main Theater, mostly recent commems and pictorials, some interesting postmarks, comments, mixed condition	\$7.50
52	Ghana. Lindner hingeless album pages, 1958-68, MNH sets, singles & S/S (value mostly in S/S); pages good condition, album ratty; HBO, CV \$80	\$10
53	GB. Type A324, 3 postal cards, 850 th ann. St. Bartholomew Fair, colorful circus graphics	\$3.50
54	GB. 3 FDCs cacheted, #2076-80, 1953-62, 2069-73; est. value \$10	\$5
55	GB - Isle of Man. 128 diff. U, 5 M stamps, plus 10 covers; wide variety of stamps	\$25
56	GB. 1950 S/S London Int'l Stamp Expo, shows copies of rare stamps	\$8
57	GB - Channel Islands. Covers & cards. Guernsey (11), Jersey (26), wide variety of stamps; plus stamps: Jersey 73 U; Guernsey 12 U and mint Cinderella	\$20
58	GB. #7b, 8b, 8c Machins, 4 large show covers (in color) stamps for cooks w/bklt panes of 15 stamps, each 1 Pound, w/recipes	\$10
59	Grenadines of St. Vincent. 3 numismatic FDCs for 200 th ann. US Independence (no coins)	\$1
60	Hungary. * & U, 98 stamps on pages in encased mounts, 1982-1984, CV \$29+	\$13
61	Hungary. 250 diff. U stamps, early to 1970, light cancels, few dups, ID on stock card, CV \$45+	\$6
62	Indo-China. 165 diff., mostly M, 1890s to 1940s; early to WWII; many airs, dues; CV \$105+	\$15
63	Indonesia. 13 mint sets, 45 M (not sets), plus 10 U; 1950s-1960s; HBO, CV \$39	\$6
64	Iran. Ret. OMNI book w/19 suspicious stamps; #236, 239, 247-54, 256, 321, 336-40; fake overprints? Sold as is for reference/study only!	NMB
65	Ireland. Ret. OMNI book, U, 86 stamps, few dups. Better include #118, 121, 125, 127, 241, 259, 261, 276, 283, 284, 285, 302, 303, 306, 308, 309, 313, 319, 325, 328, 358, 359, 366, 392, 412, 554, 594, 763, 766, many others above minimum value; CV \$48+	\$4
66	Islands! Anguilla #271-4*; Bahamas #612, 710 (U); Bermuda #727, 737 (U); British Virgin Islands #55*, 202-5*; Cape Verde #3(U), 16*, 60 (U) RA1-3 (U); Cuba 182-4*; Dominica 301-3*; St. Helena 153-5*, 195-6*; St. Lucia 237-40*; Trinidad & Tobago 166-8*; nice values, all in glassines, CV \$30	\$3
67	Islands/Small Countries. Covers, cards, 34 diff.; Antigua, Bahamas, Barbados, Falklands, Faroes, Fiji, Grenada, Guernsey, Jersey, Madeira, Malta, Isle of Man; CV ?	\$15
68	Japan. 73 U stamps, 1980s-1990s, #1507-2700s, all higher values, CV \$48	\$3
69	Japan. 291 stamps, some dups (no more than 2 of any), well spread, 1880s to 1990s, mostly U, incl. #150-151, CV \$150+	\$15
70	Japan. Ret. sales book, 44 stamps, #119//2162, * & U, retail \$34, CV \$65+	\$8
71	Liechtenstein. FDC-Maximum cards, 3 sets, S & W Olympics, 1984 & 88, CV \$9	\$5
72	Liechtenstein. FDC, World Soccer Champs, cacheted, unadd.	\$0.75
73	Mexico. Ret. OMNI pages, 70 stamps, * & U; All \$1 + CV, incl. M: 707, 710, 1125, C186, E18; U: 1502-05, 1601, 1767, 1769, 1791, C479; most others over minimum value; CV \$40+	\$4
74	Monaco. #337 on cover; response from "Director of Office of Emissin" re. stamp account, Monaco to Rome	\$5
75	Mongolia. Unusual, 5 CTO sets in colorful folder announcing "The 800 th Ann. of Great Mongolian State"; #1492-98, 1528-34, 1539-45, 1551-54, 1568-74; CV \$11.95?	NMB
76	Nigeria. #771-772, Rotary Intl' set, MNH, thirty sets! SCV 2007 each set \$2.50; for trader/dealer! Total CV \$75	\$8
77	Norway. #192, 202, 304 (4 stamps) on commercial cover (color), various labels	\$5

Lot #	Description	Minimum Bid
78	Olympics/Sports. All MNH, 34 sets/singles, s/s, Solomon Island, Samoa, Chile, Costa Rica, Belgium, Yugoslavia, Russia, Denmark, Taiwan, Hungary, Bermuda; HBO, CV \$65+	\$20
79	Olympics/Sports. 181 stamps, * & U, 20+ sets, HBO, CV \$57+	\$12
80	Olympics. 21 covers w/cancels for 1984 Los Angeles Olympics; One cover stamp damage; Unaddressed; HBO	\$5
81	Olympics. 2 covers: 1976 Winter Olympics, Innsbruck; 1988 Summer Olympics, Seoul; cacheted, unaddressed, HBO	\$1
82	Russia. Mostly mint sets, singles, some U, S/S, HBO, CV \$66+	\$20
83	Ryukyus. Mint sheet of 20, #181, boxing, HBO, CV \$8	\$2.50
84	Ryukyus. Mint sheet of 20, #179, tennis, HBO, CV \$8	\$2.50
85	Romania. 600 commems, U, F/VF, in glassines, few dups, all large, est. CV \$150	\$60
86	Romania. 725 diff U, F/VF, identified, defines, commems, few dups; to early 1980s, est CV \$150+	\$75
87	Scandinavia. All higher values, cataloged; Finland #18, 863a,c,d,e, 1181-2, B135-7 (all U), B138-41*; Iceland 554 (U); Norway 765 (U), 834*, 978*; CV \$39+	\$4
88	Se-tenant blocks (different stamps attached). U w/US (18 stamps), GB Machins form bkls (6) & Canada (1)	\$14
89	Slovak Republic. 37 U covers, cards, wide variety of stamps; plus 7 U stamps	\$25
90	Small Country Covers/Cards. 41 diff. Canal Zone, Andorra, Bahamas, Cyprus, Czech Republic, Faroes, Jersey, Gabon, Guernsey, Luxembourg, Isle of Man, Namibia, Nepal, Slovakia	\$20
91	Socked-on-the-Nose. Bulls eye cancels! Covers, cards, 79 different; Austria, Belgium, Canada, Cyprus, Denmark, Finland, France, Jersey, GB, Germany, Guernsey, Italy, Netherlands, Monaco, Morocco, Norway, South Africa, Sweden, Switzerland, Taiwan, USA, Vatican, Yugoslavia	\$30
92	South & Central America. 49 stamps, * & U; Chile #366*, C279; Colombia 725; Panama C43*, C44*, U: C17, C40, C45; Paraguay: 20*; Peru 108, 151, 164*, 111* 112, 120*, 125*, 154-56, 160, 165, 173, 184, 185, others incl.; few Paraguay, Surinam, Nicaragua.	\$2
93	South America. 970 diff., 5 countries; Argentina (209) – no Official Departments; Brazil (271), many MNH; Colombia (156); Uruguay (155); early to 1960s-1970s; CV \$230	NMB
94	Switzerland. #628 Sept. 1977, Xmas/New Years picture postcard of alpine, folded card with Greetings in 4 languages.	NMB
95	Thailand. Ret. OMNI pages, mostly older, 80 U stamps; incl.: 144-46, 158-59, 165-67, 186-87, 189-190, 193, 197, 198, 210-212, etc. – too many to list! Contact auction manager if further information required; CV 39+	\$4
96	Tuvalu. 139 U stamps, incl. #23-37, 96-113, HBO, CV \$102+	\$10
97	Umm Al Qiwain. Unusual country, all Scott numbered on ret. OMNI pages; 26 stamps, * & **, incl. #13-18, 20-25, 29-33, C6-C9, CO2-CO4; CV \$15	NMB
98	UN – Geneva. Souvenir folder of UN stamps issued in 1971 from Geneva, HBO, CV \$3	\$1
99	UN. 2 souvenir folders of UN stamps issued in 1967, HBO, CV \$6.10	\$2
100	Worldwide. Packet of sales cards & glassines with * & U sets, singles, from all over, all eras; priced on cards at \$47.60 (about 30% of CV)	\$15
101	Worldwide. Mish-mash/sorting, cataloging fun for small investment! Odds & ends on ret. OMNI pages, dealer cards, * & U: Philippines, Poland other P's (63 stamps), Syria (13), Turks & Caicos (17), Vatican (7), Canada (3)	\$2
102	Worldwide. Ret. OMNI pages, 150+ stamps, * & U, every place under the sun, all eras, many good values; some better items: Greece #586*; S. Australia 52 (U); Ryukyus MNH 79, 84A, 85, 114, 136-8, 144, 151-55, 157-61, 173-7; C6 (U); UN (U): 619, 650, 653, 658, 659, 663, 784, 785, others, no minimum values! Bermuda 304-7*, 312-15*, 316-17*, Norway, Sri Lanka, Germany, New Zealand – too many to mention, all better values! CV \$180+	\$15
103	Worldwide. 6 ret. ISWSC books. 214 stamps, \$162 retail remaining. France, Turkey, Guatamala, Indo-China; mostly pre-1940; CV much higher than retail listed.	NMB

Lot #	Description	Minimum Bid
104	Worldwide. 5 ret. Blue books (50 cent minimum CV each stamp); 175 stamps, mostly BOB; Belgium, Egypt, Germany, Portugal, Switzerland (semi-postals); mostly pre-1940; 1999 CV \$358+ Gee whiz!	NMB
105	Worldwide. All better stamps (no minimum values), * & U. Ret. OMNI pages, Belgium, Bahrain, GB, France, Italy, others; 106 stamps, CV \$215	\$12
106	Worldwide. Better values, many countries, mostly U, old and new; 70+ stamps, CV \$160+	\$7
107	Worldwide. Mixed countries lot: New Zealand, Canada, GB, France, Switzerland, Germany, Others; ret. OMNI pages, 130 stamps; New Zealand: #1038-43*, 1085-8 (U), 1091*, 1092*, 1861-6*; Papua New Guinea 884 (U); Singapore 93*; Hong Kong 651E (U), too many to list; CV \$130	\$10
108	Worldwide Mint Bonanza! About 90 stamps, all eras, with singles, sets, commonwealth, etc. Antigua, Ascension, Australia, Bahamas, Canada, Caymans, German Alsace, GB, Japan, Kuwait, Malaysia, Namibia, St. Helena, Solomons, Swaziland, Turks & Caicos, Tokelau, UN, Uganda, Venezuela	\$20
109	Worldwide. All higher values in 3 ret. OMNI books; 300+ stamps, mostly U, strongest in GB but wide variety of countries, incl: GB 298, 307, 326-28, 404, 427, 1349, 1444, 1476, 1577, 1638, 1662; Denmark 7, 18, 30, 48, 54, 97, 118, 124, 128, 171, 172, 173, 261, 431, 458, 1002; Austria, Bahamas, Belgium, too many to list; Great bargain! CV \$200+ Unbelievable!	\$10
110	Worldwide. 453 U stamps; Europe, Asia, US; mostly commems, some dups., HBO, CV \$60	\$6
111	Album pages. Newfoundland White Ace pages, 1857-1947, many with clear mounts.	\$4
112	Crystal Mounts. Eleven packs of strips; sizes small to large, blocks, covers, plus 4 envelopes crammed w/used cut mounts of various sizes; also 9 packs Hygrade Brand clear acetate strips, self stick mounts	NMB
113	Ephemera, stamp collecting. Old price lists, old dealer covers & glassines, book of printed & gummed country labels, how-to books	\$10
114	Harco. 3 ring binder w/black quadrilled pages (60+), 8 white pages; most have hinge marks but all in excellent condition	\$15
115	KABE. Binder, green "Apollo" Springback in excellent condition; new retail \$83.90	NMB
116	Lighthouse. Binder, green, embossed "France"; Fine condition, shows no wear; some very faint marks; Lexus Springback "DL", top of line; retail \$79.90	NMB
117	Literature. "Encyclopedia of Plate Varieties on US Bureau Printed Postage Stamps" by Loran C. French; published by Bureau Issues Association (1979); minor wear; great for varieties research	\$25
118	Scott International Album. Pt. 2A-B, 1940-1949; incl. 1219 diff. stamps mounted; no US pages; pages in good condition in used Scott binder; HBO, new retail \$150 (plus stamps)	NMB

END OF AUCTION

CLASSIFIED ADVERTISING

Rates per Insertion: First 30 words, including name, address, and ZIP Code are \$3. Additional words are 20 for \$1. NOTE: *State abbreviations = one word; "P.O. Box 1234" = two words; ZIP Code = one word.* Make all checks payable to "ISWSC" in U.S. dollars. Send text and payment for advertisements to the Editor.

TRADE 150 DIFFERENT LARGE stamps. Take only what you want, replace with large stamps. Alvin Lambert (ISWSC #1135); 1314 Fulton; San Antonio, TX 78201-5112—USA. stampguys@satx.rr.com [07-08/08]

BREAKING UP 60-YEAR ACCUMULATION. Let me send you a stuffed envelope of old, new, mint and used, etc. Pick what you want at 1/3 SCV and return the balance. Gelfman (ISWSC #1849); Box 315; Old Bethpage, NY 11804—USA. [09-10/08]

OVER 185 U.S., U.N. AND CANAL ZONE First Day Covers and similar material 1/2 cacheted and 1/2 unaddressed. Includes #868, 1335, 1569a, 783, 801, 894 and 1498a (8). Catalog Value over \$350. \$100 cash or trade for U.S. Possessions from my list. Further details from Norm Young (ISWSC #739); 22827 Balcombe Dr; Novi, MI 48375—USA. [07-08/08]

Wilmox's Den

by Wilmox, Writer Dude

Review of mixture: \$10 for \$100+ SCV, postpaid. Ashmead Collectibles; PO Box 1938; Ponte Vedra Beach, Florida 32004-1938. From an advertisement in *Linn's Stamp News*.

Cost: \$10.00

Stamps: 135 sound; 6 faulty

SCV: \$103.33, faulty not counted

Scott numbers of stamps received. A * indicates unused, a ** indicates mint never hinged. Quantities in parentheses indicate number of copies received.

Angola 393; Argentina 543**, C82**, Australia 439C, 1534*; Belgium 1574; Bosnia B13-15; Brazil 725, 773, 774, 953, 1084, 1098, 1119, 1967, 2631, 2632, 2636C, 2636G, 2870; Bulgaria 3421, 3652-4, 3691-3; Chile C313*; Christmas Island 381, 402, 413 (2); Croatia 38, 47, 53, 56; Egypt C205; Germany 716, 775, 951, 1765, 2008, 2028, 2319, B406, OL13; Great Britain 396, 403, 621, 1780, 1838, 2005, MH162, MH232, MH237, SMH15; Greece 2023, 2167, 2172, 2196; Guernsey 164, 296; Hong Kong 774, 1002, 1011; Hungary 3487; Indo-China 123*, 244*, C15*; Indonesia 1088A, 1267, 1316, 1944, 1951, 1992; Ireland 334, 456, 511, 652; Isle of Man 231, 352, 354; Italy 708, 1722*, 2062; Japan 142, 274, 275, 355*, 2244, 2442, 2546, 2616, 2688e, 2693h, 2744, 2745, 2813, 2820j, 2877a, 2879a, 2896; Japan - Hokkaido Z499; Japan - Hyogo Z149; Japan - Okinawa Z420; Japan - Saitama Z445; Japan - Tokyo, Z226, Z523; Japan - Yamaguchi Z434; Jersey 818; Lithuania 780; 787**, 796**, 801; Montserrat 143; Romania 1836**, 2163**, 2205**, 2226**, 2422**, 2548**, 2970**; Saudi Arabia C4; South Africa 1194a, 1195a, 1197a; Sweden 687; Turkey C37; Tuvalu 871**, 872**; Ukraine 139*; Yugoslavia 56, 1L11*



My initial perusal was very positive, showing a lot of desirable countries and very few undesirable ones. There were, for instance, no masses of modern Caribbean (only an official from restrained Montserrat) and very few Iron Curtain. It also appeared to be a mixture largely consisting of recent stamps, which is a feature important to many people.

The mixture contained 135 sound stamps and 6 faulty stamps. This works out to 4% faulty, which is not bad. The faulty will not be considered in the rest of this column.

VALUE	QUANTITY
\$0.20	13
\$0.21 — \$0.49	46
\$0.50 — \$0.99	48
\$1.00 — \$1.99	20
\$2.00 — \$2.99	3
\$3.00 — \$3.99	3
\$4.00 — \$4.99	0
\$5.00 —	1

There were an impressive 134 face-different stamps, with the only duplicate being Christmas Island #413, a stamp valued at \$0.80. Fully 18% of the stamps are from Japan, mostly very recent, and I believe many recent Japanese stamps are overvalued by Scott, so this mixture in turn may be overvalued somewhat.

A couple stamps required a judgment call. Some modern Greek issues are available in sheet and booklet versions, but only the sheet versions are priced in Scott; there is a notation that the booklet stamps sell for "much less". "Much less" is unquantified, so I valued them at 10% of the sheet stamp value. One Indonesian stamp had perforations cutting well into the frame, and I valued that at 50% Scott.

Continued on page 13

Membership Update

New Members

- 2574 **Nancy Daniel** (exp. 05/31/09)
976 County Rd 912
Nacogdoches, TX 75964-4207—USA
nancyd617@yahoo.com; A, D, Adv(50), EE
- 2575 **Joseph McCloskey** (exp. 05/31/09)
185 Prospect Park SW, Apt 708
Brooklyn, NY 11218-1348—USA
A, F, Adv, Tristan, Mongolia, Russia
- 2576 **Robert Velardo** (exp. 05/31/09)
209 Decker Ave
Staten Island, NY 10302-2018—USA
imarseille@excite.com; B(1900-40), G, Adv(20),
EE, 1, 3, 4, 7, airmails and definitives

- 2577 **Herbert Schrader** (exp. 05/31/09)
555 E. Basse Rd #101
San Antonio, TX 78209-8329—USA

Reinstated

- 2221 **Zarzynski**

Address Changes/Corrections

- 102 **Schloss**
PO Box 607333
Chicago, IL 60660-7333—USA
- 2527 **McGee**
6433 Topanga Canyon Blvd, #112
Canoga Park, CA 91303-2621—USA

Ventures in Printing:

Entirely Recess-Printed CMP Stamps—Part 3

by Sandy Stover (#2325)

Editor's Note: This is the fifth article in a series, adapted from a book on classic multicolored postage stamps currently being written by the author.

The previous articles discussed six entirely recess-printed CMP (classic multicolored postage) stamps of Austria, Iran and Chile, all of which were issued prior to World War I. One additional stamp meets those same criteria: Barbados, Scott 109: *The "Olive Blossom"*; 1p; 1906; black, green, blue (Figure 1).

[Note: Throughout these articles I use the term "recess" as equivalent to *intaglio*, although this is technically imprecise. Strictly speaking, recess printing includes both *intaglio* and photogravure, but the latter is treated in these articles as a separate method.]

The Olive Blossom: An Occasion for Philatelic Stuffiness

I have not been able to discover whether the plates for the Barbados stamp were manufactured by the mechanical or the electrolytic process. Both Bayley (p. 97) and Poole (p. 6) report that the stamp was recess-printed by de la Rue & Co. of London. Easton (p. 108) states that "the earliest stamp for which de la Rue made a printing plate by the transfer roller [mechanical] process is apparently the 1895 Twopence Halfpenny issue of St. Vincent"—evidence that the Barbados stamp *could* have been of the steel plate variety. On the other hand, Williams and Williams (p. 232) write that de la Rue probably used the electrolytic process in printing Falkland Islands 1904-12 ½ d. to 5 s., suggesting the opposite possibility. But in either case, given its 1906 date of issue, it would have been an obviously risky and expensive undertaking.

The stamp was designed by Lady (Gilbert) Carter, American-born wife of the Barbados General Governor (Straight, p. 132). Assuming the accuracy of my inventory, it is one of only nine British Empire CMP stamps, the other eight having been issued by Heligoland (6) and Canada (2). There may be puzzlement, therefore, about the rather negative reception that *Olive Blossom* received; we might rather expect some general admiration, at least for the

venturesome effort. But Poole quoted an unnamed editor of the "Monthly Journal" (no date), who had written at the time of the stamp's issue:

... the other event [1605 British occupation of Barbados] was one of some local importance, certainly, but the collecting of pennies all over the world does not seem a very dignified way of commemorating it. Perhaps, however, we were wrong; the celebrations may have been duly held last year, and it was only when the bills came at Christmas that an indigent administration found itself reduced to the necessity of sending round the hat and inducing stamp collectors to swell the collection. This would account for the belated appearance of the subscription forms... We are very sorry for the Barbadian treasury but in all these cases we would recommend the philatelist to adopt the attitude attributed to the snark: "He collects, but he does not subscribe."

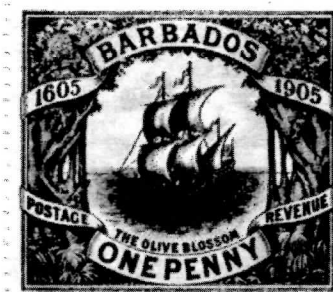


Figure 1—Barbados, Scott 109, *The Olive Blossom*, 1906.

A lot of trouble must have been taken over the latest label, no less than three colors being employed for its embellishment. In the center is the good ship *Philatelia* (christened "Olive Blossom" for the occasion) in full sail; at the sides are twisted trunks of, we believe, the Bearded Figtree (*Ficus Philatelicus Speculativus*); whilst above and below are scrolls, inscribed "Barbados—1605-1905" at top, and "One Penny—Postage—Revenue" at foot. The general design, including the ship, is in black, the sea and clouds are in blue, and there is a patch of green over the foliage in each corner, which looks as if it had been dabbed on with a brush, but is really composed of fine lines and dots. The engraving appears to be in *taille-douce* throughout, and the printing must have involved an amount of expense worthy of a better cause (Quoted in Poole, p. 6).

Sarcastic, witty, and—well—*philatelically stodgy*! Small wonder that early twentieth century administrators

Continued on next page

Ventures in Printing

Continued from previous page

hesitated to run risks in the printing of CMP stamps!

Apart from relevancy to the stamp in question, this quotation has interest—at least for me—as illustration of a powerful *conservatism* that permeated much of the early twentieth century philatelic press, and perhaps much of the collecting elite as well. I have not yet

only to take advantage of collectors.

(What other questions might such a study address? Did this conservatism include a preference for recess printing as over against the other printing methods; and if so, was this preference grounded in an explicitly stated *aesthetic* rationale—as distinct from the often stated *security* rationale? What stamp *subjects* were favored? Was Robson Lowe's 1940 view of multicolor as "gaudy polychromy" a *throw-back* to this earlier conservatism, or would Lowe have been an *atypical* classicist even in 1900? Was Lowe's particular brand of classicism an example of what one British art theoretician has claimed is a tendency in Western culture toward *chromophobia* [Batchelor]? Were British and American philatelic conservatisms the same? When did collectors, especially in Great Britain and the United States, begin clamoring for multicolor?)

Back to the *Olive Blossom*: Poole continued further to report that, although "most collectors [in 1950] consider[ed] this [*the Olive Blossom*] a particularly attractive stamp,"

... according to a report in a local newspaper the good people of Barbados were anything but happy about it at the time of issue. They seem to have expected "a stamp of a highly attractive, interesting, and representative character" and they complained that "as far as ugliness goes, it certainly surpasses many issues of the same order" (Poole, p. 6).

Finally, Halward, writing as late as 1992, added a bit more complication to the stamp's history of appreciation (or lack thereof):

Through the years there's been controversy aimed at the identification of the ship depicted on the stamp. Some say it could not be the *Olive Blossom*, for history records that Barbados was not officially occupied until 1627.

The attractive stamp had three colors intaglio-printed by De LaRue. Sadly, the use of black, blue, and green colors did not give the commemorative an outstanding appearance (Halward, p. 8).

This is a curiously mixed statement. Evidently the writer approved of the multicolor—and of the composition of the stamp as well—but believed that the wrong color combination was chosen. What does the reader think? Does the stamp also create the unfavorable impression of an engraving to which watercolor has been added—the "dabbed" appearance mentioned by the 1906 writer? The British Empire



Figure 2—*Olive Blossom* at center of illustration from Robson Lowe's *Masterpieces of Engraving* (p. 85), described by Lowe as part of a "Chamber of Horrors."

decided whether *classicism*—or some other term—is best suited for labeling this phenomenon; and it is still a rather nebulous construct for my future study and writing. What were some of the conservative's pet peeves? As in this particular diatribe, there was scorn aimed at "unnecessary" commemoratives, thought to be issued only in order to fleece collectors. (Would this sarcastic editor have lauded the multicolor had it been applied more to his aesthetic liking—and to a definitive?) Later, following the First World War, the stamps of "Neurope" were often ridiculed, again with the view that the plethora of new issues were meant

printed numerous classic *bi-colors* that give a similar impression, yet perhaps with more aesthetically pleasing results. (See, for example, Trinidad and Tobago landscapes, Scott 36, 37, 38, 42, 52, 55, 56; 1935-38.)

And Robson Lowe—did he have an aesthetic opinion about the *Olive Blossom*? I will save his detailed remarks for a later article and note only that he put the stamp in the center of a panel of stamp images (Figure 2), all of which were part of a larger group that he called the “Chamber of Horrors”: “Wherein are diligently displayed all those Offences against Taste and Sobriety whereof diverse Postmasters together with sundry Designers and Stamp-Makers have been Guilty” (Lowe, pp. 83-86).

Thus, the *Olive Blossom* does not make everyone’s list of the most beautiful CMP stamps; but it at least deserves appreciation as the British Empire’s one attempt to *recess-print* such a stamp. It is one more attempt than was made by the United States.

References

Batchelor, David (2000). *Chromophobia*. London: Reaktion Books.

- Bayley, Edmund A. (1989). *The Stamps of Barbados*. Wildey, St. Michael, Barbados: Cole’s Printery Ltd.
- Easton, John (Fred J. Melville) (1949). *Postage Stamps in the Making*. London: Faber and Faber Limited.
- Halward, Philip (1992, May 2) “United Kingdom Comment: Barbados Issue”. *Stamp Collector*, p. 8.
- Lowe, Robson (1943). *Masterpieces of Engraving on Postage Stamps, 1840-1940*. London: Postal History Society.
- Poole, Bertram W. H. (1950, January 28). “‘Olive Blossom’ Stamp of Barbados”. *Western Stamp Collector*, p. 6.
- Scott 2005 *Classic Specialized Catalogue of Stamps and Covers, 1840-1940*. Sidney, OH: Scott Publishing Company.
- Stover, Sandy (2008). *An Inventory of Classic Multicolored Postage Stamps* (unpublished).
- Straight, David (2008, February). “‘Lies Dead in This Office’”, *Journal of the American Philatelic Society*. Vol. 122, No. 2, p. 132.
- Williams, L. N., and M. Williams (1990). *Fundamentals of Philately* (Revised Edition). State College, PA: The American Philatelic Society.

CHECK YOUR LABEL AND RENEW EARLY!!

Wilcox's Den

Continued from page 10

One attractive stamp, Australia 1534 (unused), has a SCV of \$9. This stamp alone accounts for 9% of the mixture's value, and is pictured below.

The total value of the stamps is \$103.33; face-different, \$102.53. Both are above the promised \$100 SCV. 13 stamps, or 9%, are valued at the minimum



Scott value of \$0.20. If those are removed from calculations, the face-different stamps total \$99.97 – still quite close to \$100. The average stamp in this mixture cost \$0.07 and had a catalog value of \$0.77.

Two interesting items, commemorative postal meter strips from Spain, are also illustrated (see page 10). They are colorful,

thematic, and entertaining, and should appeal to topical collectors focusing on Catholicism/Religion and Boats/Ships, respectively. Lacking an easy way to value them,

they are not included in these calculations, but I would pay upwards of \$1 for such items in topical areas of interest. The seller also included two fairly mundane show covers with the lot. These were not promised and have also been left out of the calculations. In included advertisements, Ashmead lists them for sale at \$0.50 to \$1.00 apiece.

Even though there was nothing earth-shattering, I had a fine time sorting these 135 stamps. Ashmead Collectibles were good to their word.

Happy Hunting!

Editor's Note: Wilcox's Den is a new column which will appear regularly in The Circuit. "Wilcox, Writer Dude" is an anagram of "Worldwide Mixture", a pseudonym designed to conceal the identity of the writer to protect against bias in mixtures sent by advertisers. Wilcox can be reached at wilcox@iswsc.org.

YEARS	QUANTITY
1840–1909	0
1910–1919	4
1920–1929	4
1930–1939	3
1940–1949	8
1950–1959	8
1960–1969	11
1970–1979	12
1980–1989	13
1990–1999	37
2000 +	35

CANDIDATES NEEDED FOR THE BOARD OF DIRECTORS ELECTION!

If stamp collecting was an Olympic sport,

Nutmeg Stamp Sales

would be a
medal-winner!

*We'd get golds in
quality and variety
with laurel wreaths
for customer service
and satisfaction.*

We're
competing for a
high score and
we want you to
be the judge.



View lots online at

www.nutmegstamp.com

Get a free catalog by calling

1-800-522-1607



• P.O. Box 4547 Danbury CT 06813 • Fax: 203-798-7902

• Email: info@nutmegstamp.com

Whatzit? Palestine Labels

by Richard Barnes (#2425)

Whatzit? Coordinator

The history of the Palestinian propaganda labels and their derivatives coincide with the rise of Zionism. I no longer have this cover, but it had the 1927 British Palestine stamps on it (Scott design A5) and a simple red label with white printing



Figure 1

stating "Keep Palestine Arab." The simple political protest labels quietly persisted until the early 1960's with the rise of the terrorist groups Fatah (al-Fateh) and the Palestine Liberation Organization (PLO). Unlike the labels of the Jewish National Fund, they were not produced as a fund raiser. Their reason to exist is political advertising. Individuals used them to show their support to the cause.

The most important development for the Middle East and the world resulting from the creation of the State of Israel was the displacement of so many Palestinian Arabs from the region of Palestine. The largest numbers of Palestinian refugees were placed in camps outside of Amman Jordan. This logically became the center of anti-Israel activity. It was here that in the 1960's the propaganda labels were produced for al-Fateh and the Popular Front for the Liberation of Palestine (P.F.L.P.). King Hussein of Jordan maintained what most people believed was a moderate non-confrontational political policy with Israel. In September 1970, Black September, the P.F.L.P. felt ready and tried to depose King Hussein of Jordan. They misjudged the will and loyalty of the Jordanian population and the military strength of the Jordanian Legion. Most of the remaining stocks of the propaganda labels, dies, etc. probably were



Figure 3

destroyed during the fighting and subsequent flight to Lebanon. I suggest that the current dearth of modern Palestinian (terrorist) labels is that there is no means of distributing such labels. The history and activities of these organizations make the legitimate governments, specifically Arab governments with Palestinian populations, look closely at users stating such political sympathies.

I have not seen a catalogue of Palestinian labels. There is a list of the Palestinian propaganda labels, written by Robert Hudson, in the first issue of the Arab World Philatelist printed back in 1978. This list identifies 13 al-Fateh labels (Figure 1), 1 Palestinian Arab Organization label and 10 P.F.L.P. labels (Figure 2). This list is not complete. I typed in the word terrorist and the first item on the Internet listed 72 terrorist organizations, 28 categorized as Islamic and 7 as Arab. Has any member information on any of these three labels (Figures 3—5)?



Figure 2



Figure 4

destroyed during the fighting and subsequent flight to Lebanon. I suggest that the current dearth of modern



Figure 5

I have not seen a catalogue of Palestinian labels. There is a list of the Palestinian propaganda labels, written by Robert Hudson, in the first issue of the Arab World Philatelist printed back in 1978. This list identifies 13 al-Fateh labels (Figure 1), 1 Palestinian Arab Organization label and 10 P.F.L.P. labels (Figure 2). This list is not complete. I typed in the word terrorist and the first item on the Internet listed 72 terrorist organizations, 28 categorized as Islamic and 7 as Arab. Has any member information on any of these three labels (Figures 3—5)?

No matter what the religious and political differences, when individuals are in contact there is an exchange of ideas and values. Is it coincidence that early Palestinian terrorist labels have a tab (Figure 6)?



Figure 6

This column has conjecture, assumptions and my opinions. Any information or comments are appreciated.



Figure 7

Due to the combination of my changing e-mail addresses, the timings of submitting this column, and the publishing of *The Circuit*, I do not have any replies to previous unknown Whatzit? stamps. These three Whatzits were sent to me asking for help to identify them. The first is a 4 ore blue

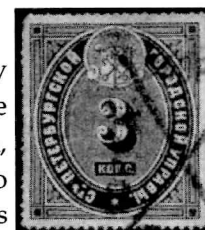


Figure 8

Continued on page 16

Disney Stamps

Continued from page 1

of training behind them and each stamp is a work of art, issued in bright warm colors, and telling a story, which is often humorous. The characters are familiar to everyone, and the end result leaves you feeling warm inside.

THE EARLY ISSUES

The first Disney stamp was issued by the United States in 1968 and commemorates the life of Walt Disney. Depicted on the stamp is Walt Disney surrounded by Children of the World. In 1970, San Marino released a set of ten stamps, the first time Disney characters were shown on stamps. The high value shows Walt Disney and a scene from *The Jungle Book*, the last animated film that Walt worked on. It wasn't until 1979 that the Disney on Stamps topic really took off. That year, 6 sets of stamps were issued to commemorate the International Year of the Child. Antigua, Dominica, Grenada, Grenada Grenadines, Maldives and Turks & Caicos Islands released colorful sets of 9 stamps and accompanying souvenir sheet.

In 1980, six more sets were issued that depicted scenes from classic Disney films, (a particular favorite of this author) including *Sleeping Beauty* (Antigua); *Peter Pan* (Dominica); *Snow White and the Seven Dwarfs*

(Grenada); *Bambi* (Grenada Grenadines), *Alice in Wonderland* (Maldives) and *Pinocchio* (Turks & Caicos Islands). These animated films on stamps are actually a topic within a topic and if the whole Disney collection looks a bit daunting, then try collecting just the sets

with scenes from the animated films.

Hundreds of stamps have been issued over the ensuing thirty years showing Disney characters in scenes from animated films, visiting other



countries, celebrating Christmas or Easter, marking important anniversaries, commemorating the Olympic Games and saluting famous people. Stamps have been issued from Anguilla to Zambia and dozens of countries in between. For a complete listing of all of the Disney stamps issued between 1968 and 2008, see Disnimation, the Disney on Stamps website at <http://www.disnimation.8m.com/HOME.htm>

Bibliography

Silvester, William (1990), *Handbook of Disney Philately*.

Intergovernmental Philatelic Corporation (1979–1980), News Releases.

Whatzit?

Continued from page 15

background and red/brown bust on a Swedish(?) local post (Figure 7). The next stamp is two shades of green and probably from Eastern Europe (Figure 8). I do not recognize it as a postage stamp. Has any member more information? Finally, this imperf grey and black 12 cent stamp has the portrait of a distinguished man (Figure 9). Any information from members is needed: confirm the country, purpose of the stamp, date, set information, etc. Please help me and your fellow collectors by sharing your knowledge.



Figure 9

Richard T. Barnes
11715 - 123rd St NW
Edmonton, AB T5M 0G8
CANADA
rtbarnes@shaw.ca

Grab Bag Report

The annual Grab Bag program has now ended for 2008. In all, 19 ISWSC members participated in the program, most of whom sent one or two exchanges. The most prolific exchangers were also referred to the Swap Circuit program.

There were a total of 59 submissions, only one of which was rejected (due to too many USA stamps, many of which were damaged). Of the remaining 58 submissions, 36 contained large stamps, 17 contained small stamps, and 5 contained CTO stamps.

It is hoped that the program can be offered again next year and that even more ISWSC members will take advantage of the program. Look for an announcement in *The Circuit* later this year or early next year for your chance to participate.

Thanks go out to Marvin Warner (#248) for managing this project the past few years.